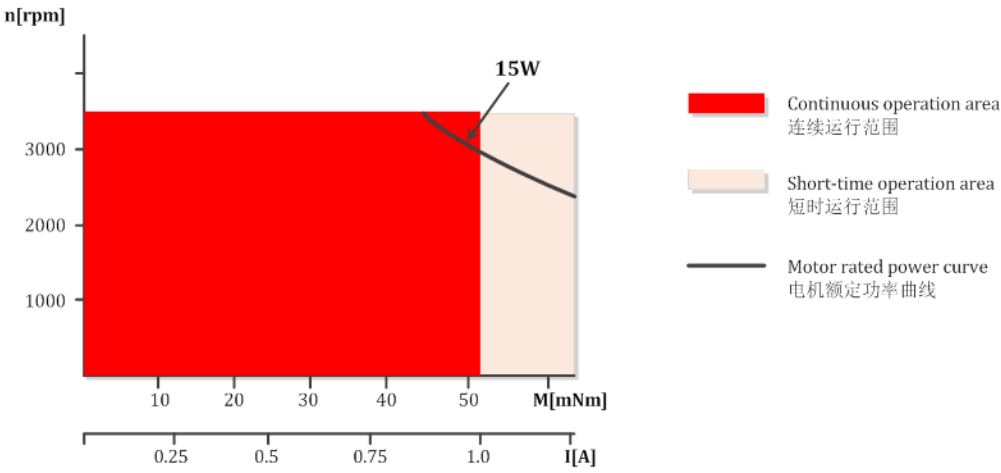


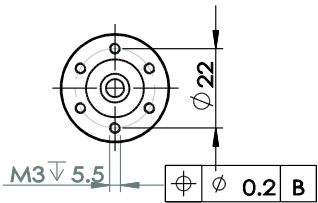
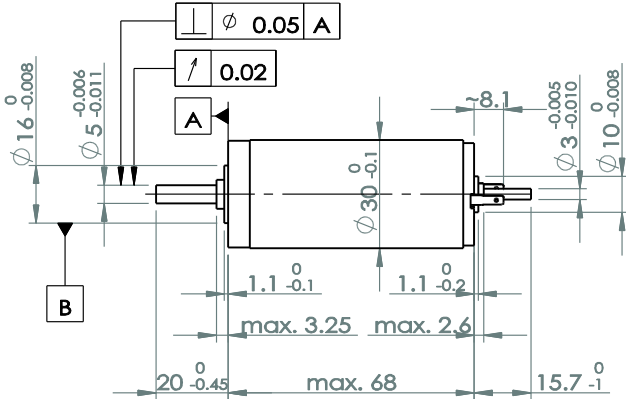
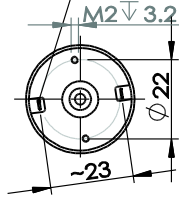
R 30 Ø30 precious metal brush 15W 稀有金属电刷 15W

				Order number 订货号			
				100261	100262	100263	100264
Motor parameters							
1	Nominal voltage 额定电压	U_N	V	6	9	12	18
2	Terminal resistance 电阻	R	Ω	0.378	0.63	1.45	2.47
3	Output power 输出功率	P_{2max}	W	13	16	14	15
4	Efficiency 最大效率	η_{max}	%	90	91	90	91
5	No-load speed 空载转速	n_0	rpm	2870	3310	2870	3190
6	No-load current 空载电流	I_0	A	0.042	0.033	0.021	0.016
7	Stall torque 堵转转矩	M_H	mNm	316	370	264	129
8	Friction torque 摩擦转矩	M_F	mNm	1.2	1.2	1.2	1.2
9	Speed constant 速度常数	k_n	rpm/V	480	369	240	178
10	Back-EMF constant 反电动势常数	k_E	mV/rpm	2.09	2.71	4.17	5.63
11	Torque constant 转矩常数	k_M	mNm/A	19.91	25.90	39.83	53.76
12	Current constant 电流常数	k_I	A/mNm	0.050	0.039	0.025	0.019
13	Slope of n-M curve 转速-转矩曲线斜率	$\Delta n/\Delta M$	rpm/mNm	9.11	8.96	8.73	8.16
14	Mechanical time constant 机械时间常数	τ_m	ms	3.42	3.14	3.02	2.96
15	Rotor inertia 转子惯量	J	gcm ²	35.9	33.5	33.1	34.7
16	Angular acceleration 最大角加速度	α_{max}	10 ³ rad/s ²	88	110	79	37
17	Thermal resistance 热阻	R_{th1} / R_{th2}	K/W	1.7 / 6			
18	Thermal time constant 热时间常数	τ_{w1} / τ_{w2}	s	16.9 / 593			
19	Operating temperature range 工作温度范围		°C	-30 ... +85			
20	Shaft bearings 轴承			Preloaded ball bearing			
21	Shaft load max 轴载荷						
	- radial at 3,000rpm (5mm from bearing)		N	28			
	- axial at 3,000rpm (axial push-on only)		N	5.6			
	- axial at standstill (axial push-on only)		N	100			
22	Shaft play 轴间隙						
	- radial 径向	<=	mm	0.025			
	- axial 轴向	<=	mm	0.15			
23	Magnet material 永磁材料			Sintered Nd-Fe-B			
24	Housing material 外壳材料			Steel, black coated			
25	Pole pairs 极对数		p	1			
26	Weight 重量		g	260			
27	Direction of rotation 旋转方向			Clockwise, viewed from the front face			
Operating Data for η_{max} of Customer's Specifications							
28	Output power 输出功率	P_{2opt}	W	14	16	13	15
29	Efficiency 效率	η_{opt}	%	82	83	81	83
30	Speed 转速	n_{opt}	rpm	2450	2870	2420	2770
31	Load current 电流	I_{opt}	A	2.76	2.13	1.38	1.02
32	Operating torque 转矩	M_{opt}	mNm	53.0	53.0	53.0	53.0

Recommended areas for continuous operation



Terminal 2.8x0.5



Dimension 尺寸图