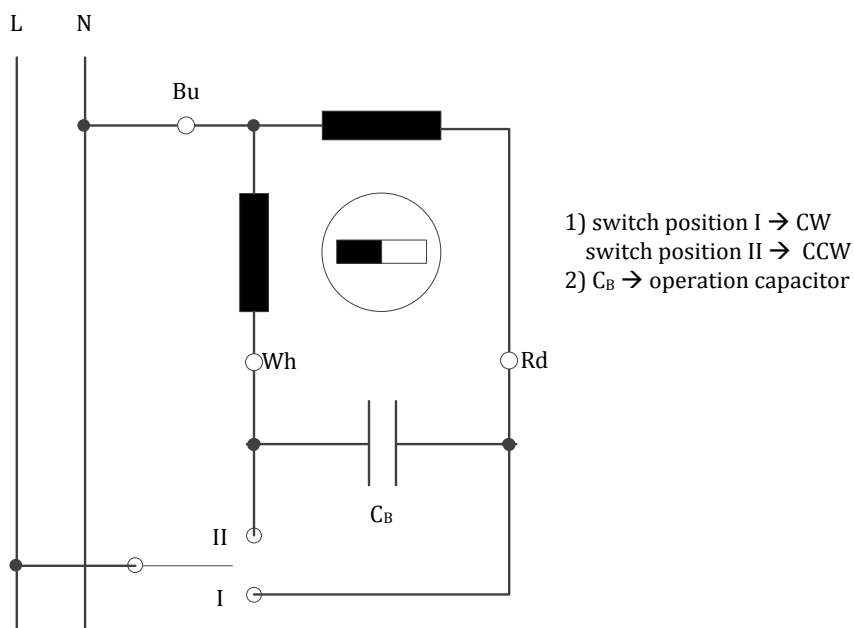


## Synchronous motor 58S-6 同步电机 58S-6

### Technical Data 技术数据

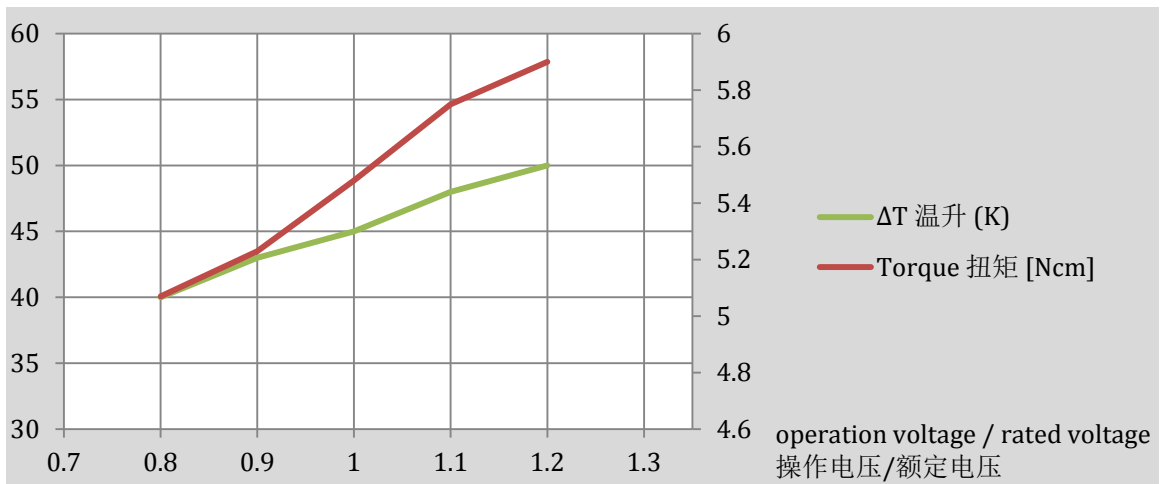
Item	Unit	Frequency	
		50 Hz	60 Hz
Rated speed 额定转速	rpm	500	600
Synchronous torque 同步扭矩	Ncm	5.48	5.02
Delivery of power 输出功率	W	2.87	3.15
Power consumption 功耗	W	8.7	9.3
Rated current (230 V) 额定电流	mA	28	29
Operating capacitor 电容	F	0.25	0.25
Max. externally permitted mass moment of inertia 允许的最大外部惯量	gcm <sup>2</sup>	210	210
Self-holding torque, typical 自锁扭矩	Ncm	1.2	1.2
Winding temperature rise 绕组温升	K	45	48
Permitted radial force 允许径向力 $F_r$	N	9	9
Permitted axial force 允许轴向力 $F_{as}$	N	2.5	2.5
Weight 重量	kg	0.38	
Protection grade 防护等级		IP 41	
Insulation class 绝缘等级		E	
Dielectric strength 介电强度		according to IEC 60034-1	

Ordering code 订货号		100161		100163		100164	
Rated voltage 额定电压	V	230		48		24	
Frequency 频率	Hz	50	60	50	60	50	60
Operating capacitor 电容	F	0.25	0.25	7.8	7.8	25	25
Rated current 额定电流	mA	28	29	183	187	306	314

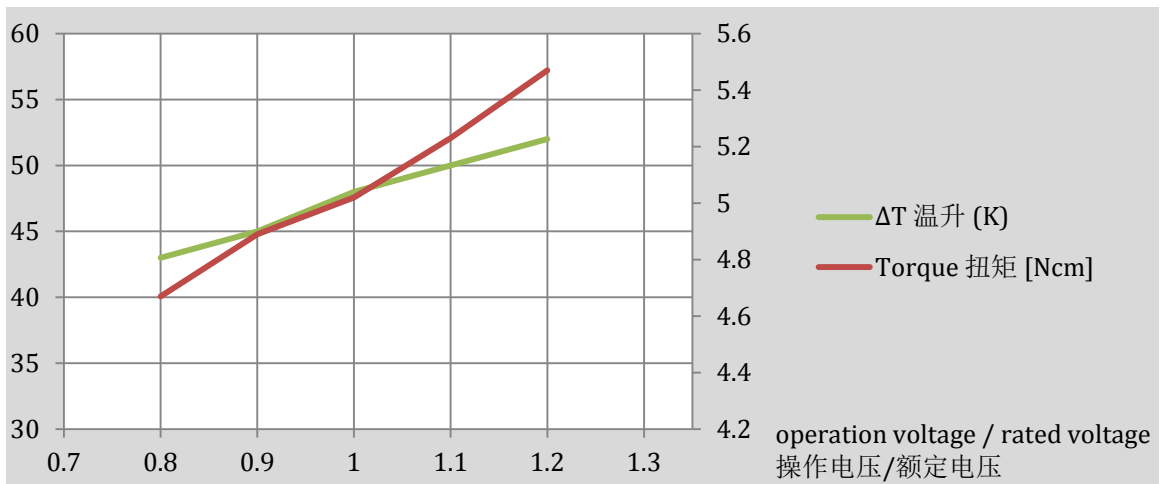


Wiring 58s-6 接线图

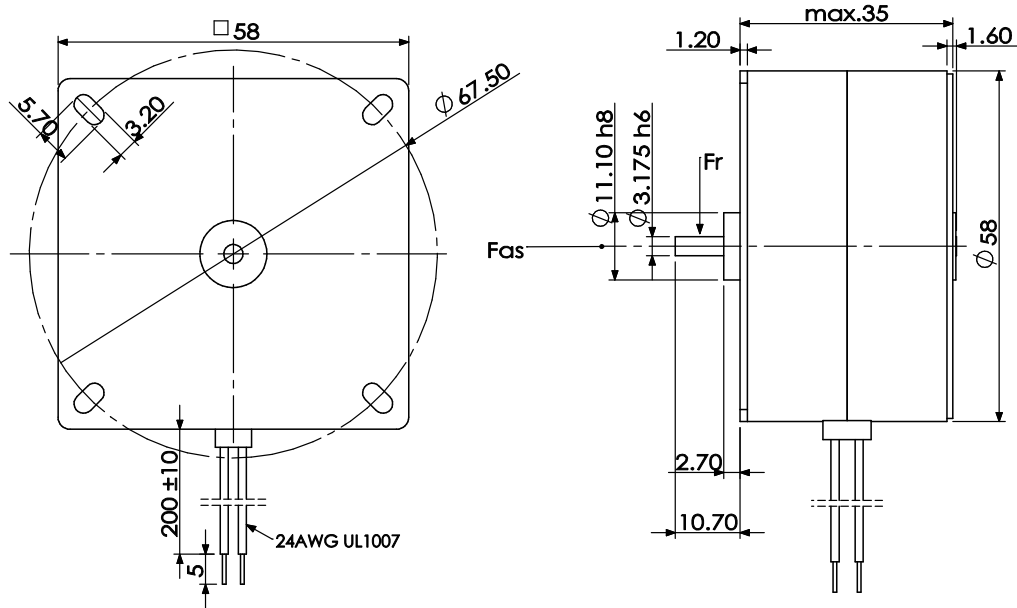
## Synchronous motor 58S-6 同步电机 58S-6



Characteristic curve 58s-6 at 50 Hz 特性曲线@50 Hz



Characteristic curve 58s-6 at 60 Hz 特性曲线@60 Hz



Demension 尺寸图